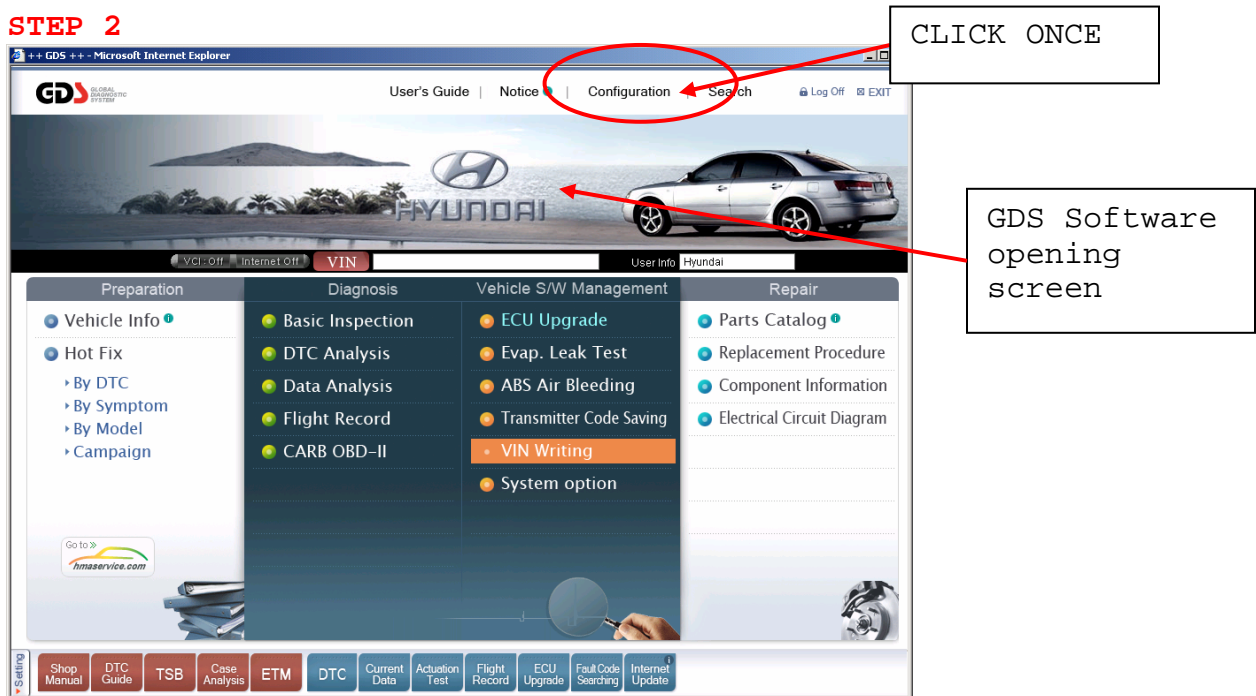


SETUP OF VCI to PC WIRELESS COMMUNICATION

STEP 1

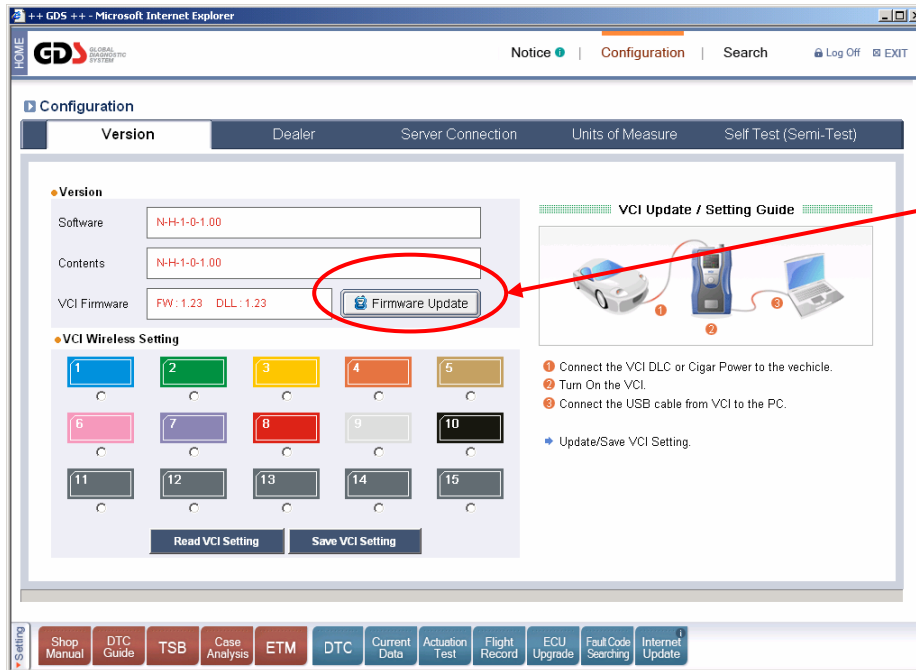


STEP 2



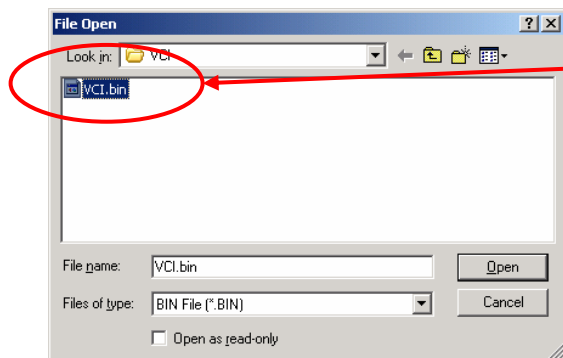
STEP 3

PLUG VCI INTO ITS AC POWER ADAPTER (find circular connector located in the wire basket on the cart)
CONNECT VCI TO PC WITH USB CABLE.
TURN ON VCI.



CLICK ONCE

STEP 4



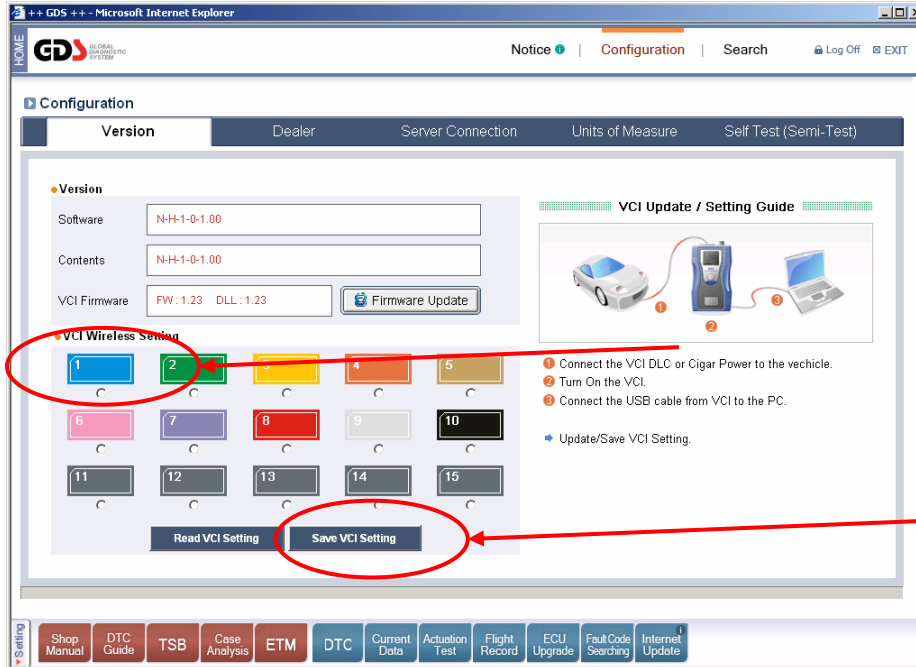
CLICK ONCE

→ VCI WILL NOW UPDATE ←

STEP 5

ONCE THE VCI UPDATE IS COMPLETE, CYCLE POWER (Off-on) TO VCI.

STEP 6



CLICK ONCE
ON BLUE #1
SELECTION
THEN CLICK
ONCE ON
"SAVE VCI
SETTING"

STEP 7

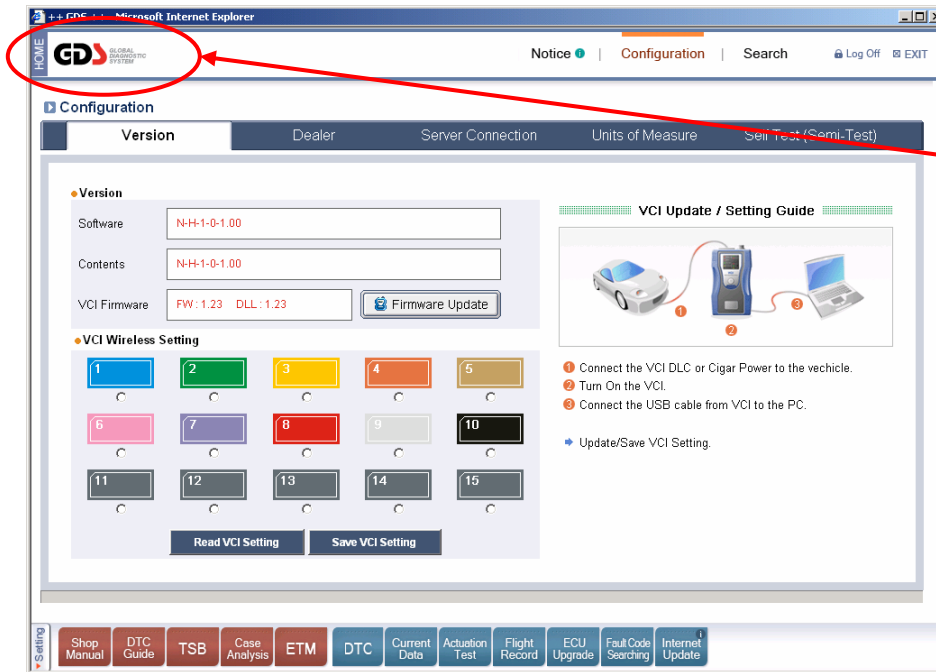
After setting is saved, turn VCI off.

UNPLUG USB CABLE AND AC ADAPTER POWER CABLE FROM VCI.

STEP 8

PLUG VCI INTO VEHICLE AND TURN ON.

STEP 9



CLICK ONCE

Return to home page to try wireless vehicle connection

